

# Trends in alcohol, tobacco and cannabis consumption among students in Austria

Julian Strizek

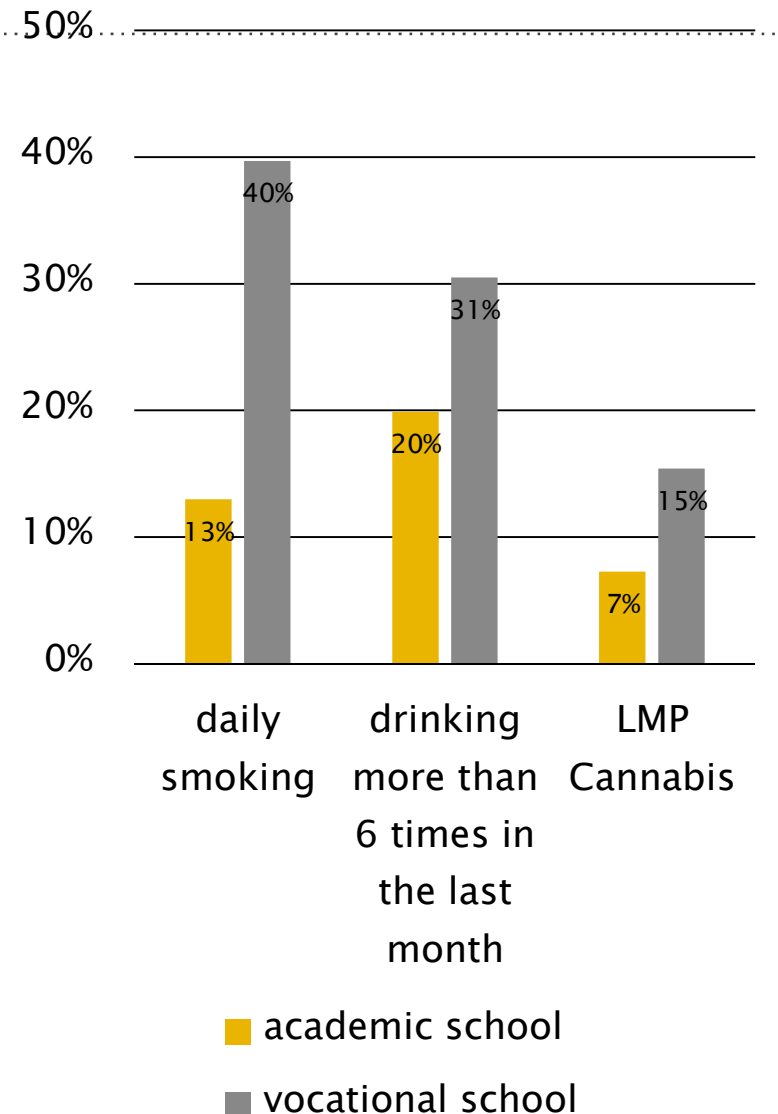
GÖG-Kompetenzzentrum Sucht



GPS Expert-Meeting: Lissabon, 20.09.2015

## Background

- » Background
  - » Several recent data sources available (ESPAD, GPS [RARHA], HBSC, ATHIS)
  - » huge decrease of tobacco consumption (ESPAD, GPS)
  - » huge differences between school types (ESPAD)
- » Further analyses
  - » Are trends consistent across different data sources?
  - » Are trends similar or different for subpopulations (sex, education)?



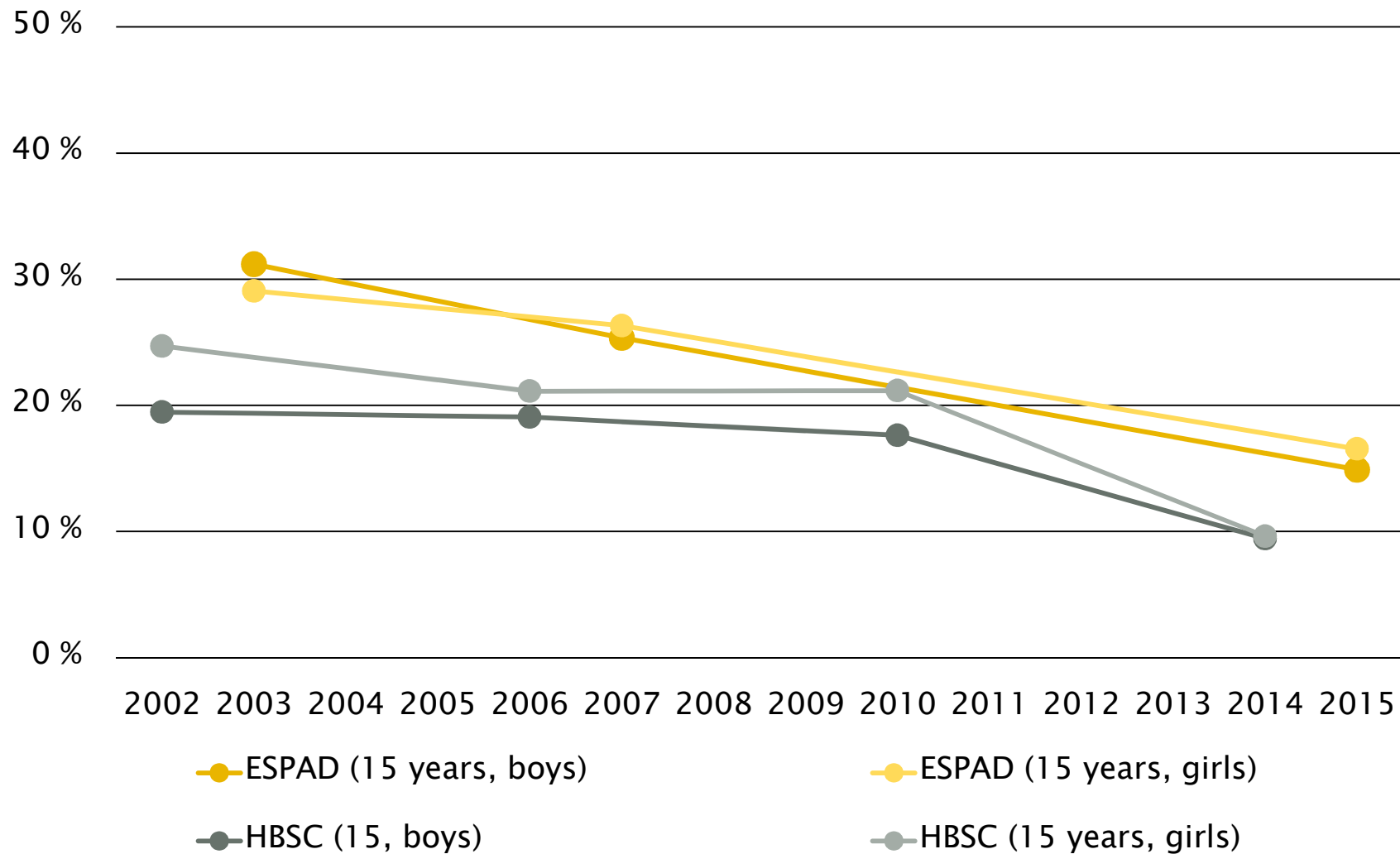
## Are trends consistent across different data sources?

Survey	ESPAD	GPS	HBSC	ATHIS/EHIS
substances covered	alcohol, tobacco, cannabis	alcohol, tobacco, cannabis	alcohol, tobacco, (cannabis)	Alcohol, tobacco
recent data	2015	2015	2014	2014
data available	2003, 2007	(1994) 2004, 2008	(1994, 1998) 2002, 2006, 2010	(2006/07)
sample size	n = 8.000	n = 4.014	n = 5.617	n = 15.771
Target group	Students (9th 10th grade)	Adult population (16 +)	Students aged 11,13, 15, 17	Adult population (16 +)
Data collection	Online	Face-to-Face & Online	Paper & Pencil	CATI

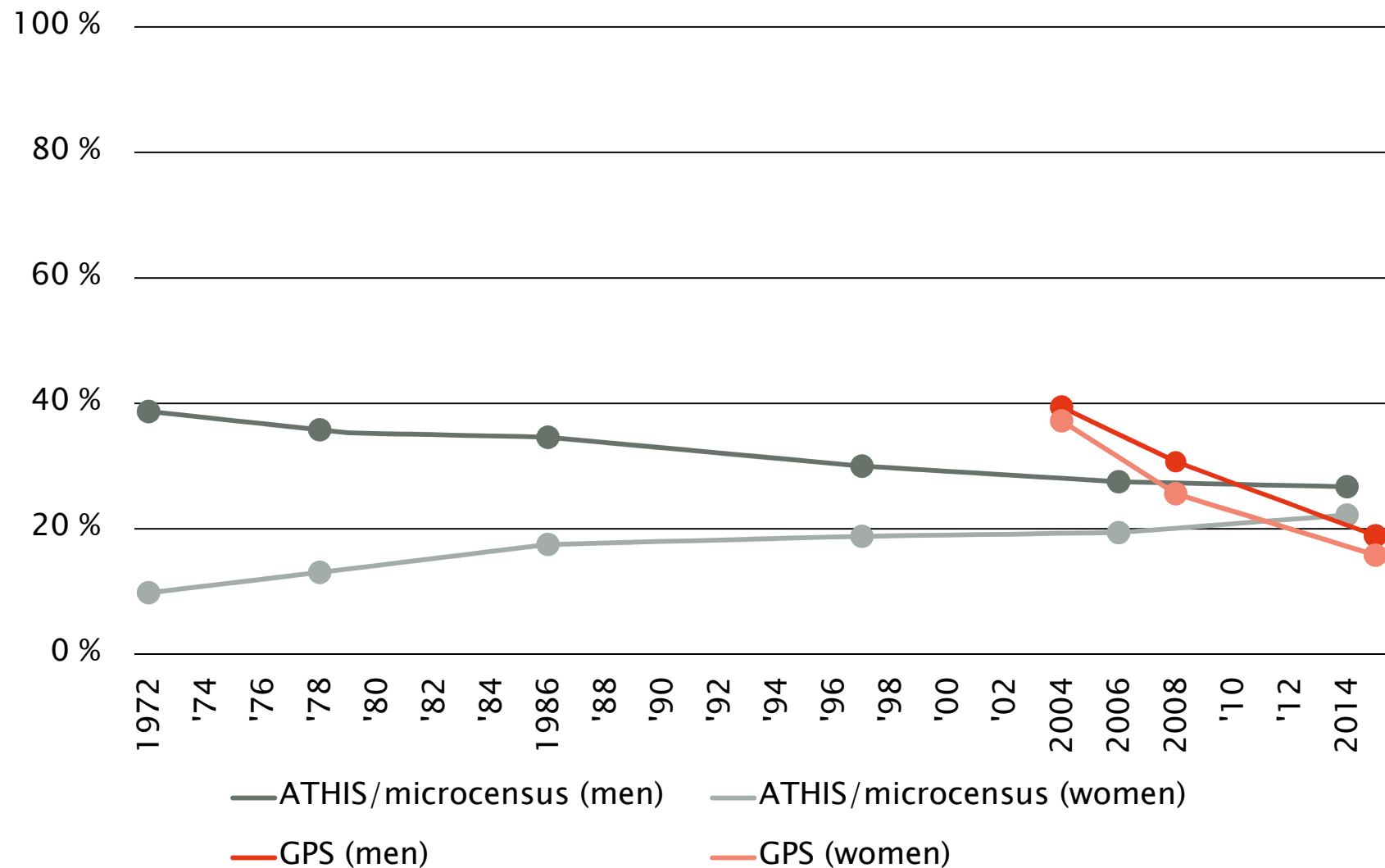
Substance	Alcohol	Cigarettes
Economy/ industry data	estimates for sales and production	taxed + estimate for not taxed

**ARE TRENDS CONSISTENT ACROSS SURVEYS?**

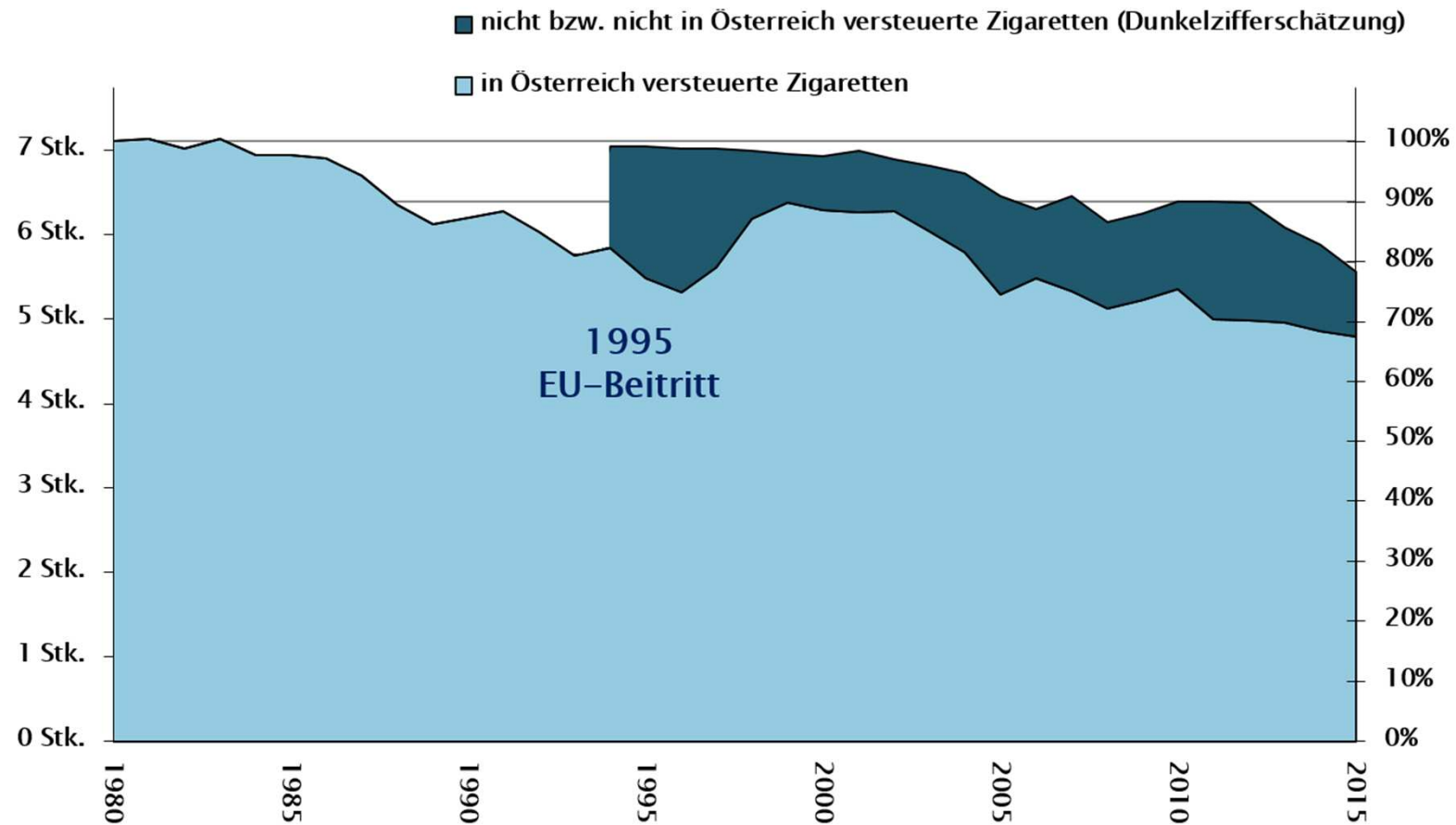
## Daily smoking among students: ESPAD and HBSC



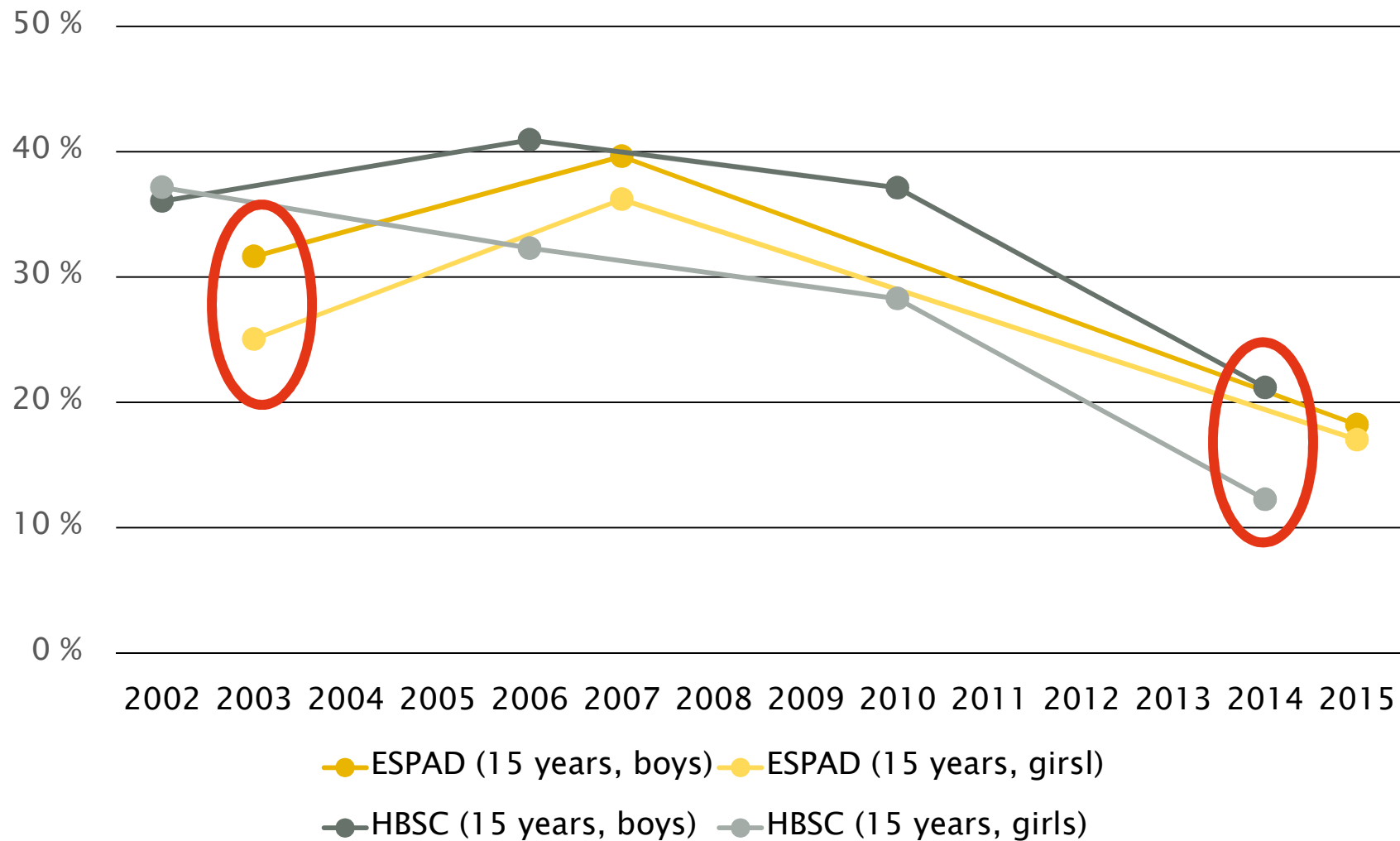
## Daily smoking among adults: GPS and ATHIS/microcensus



## Cigarettes per capita: sales data plus estimates for unrecorded

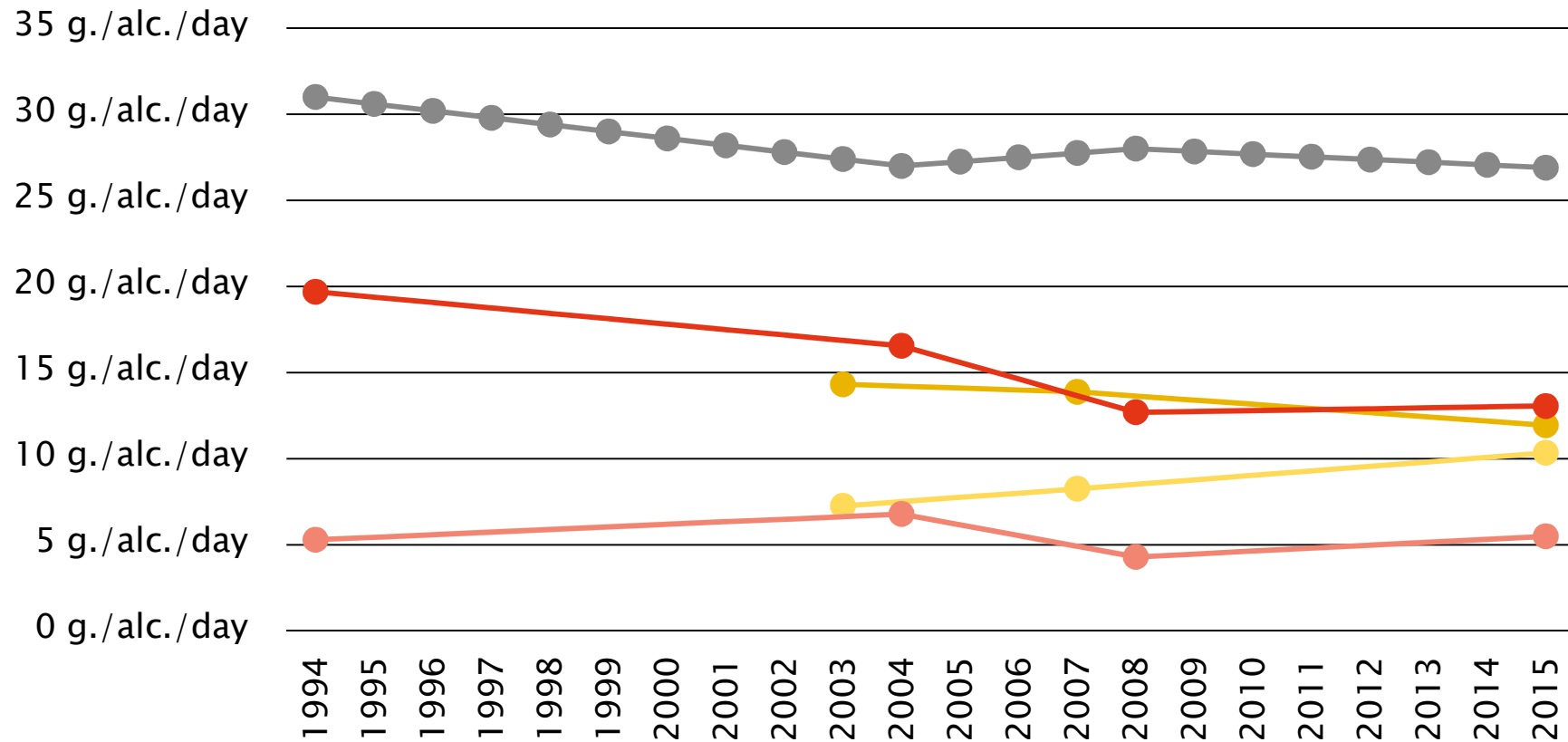


## Alcohol frequency among students: ESPAD and HBSC





## Quantity of alcohol consumption: ESPAD, GPS, Sales and production



—●— ESPAD (male, 15 & 16 years old)

—●— ESPAD (female, 15 & 16 years old)

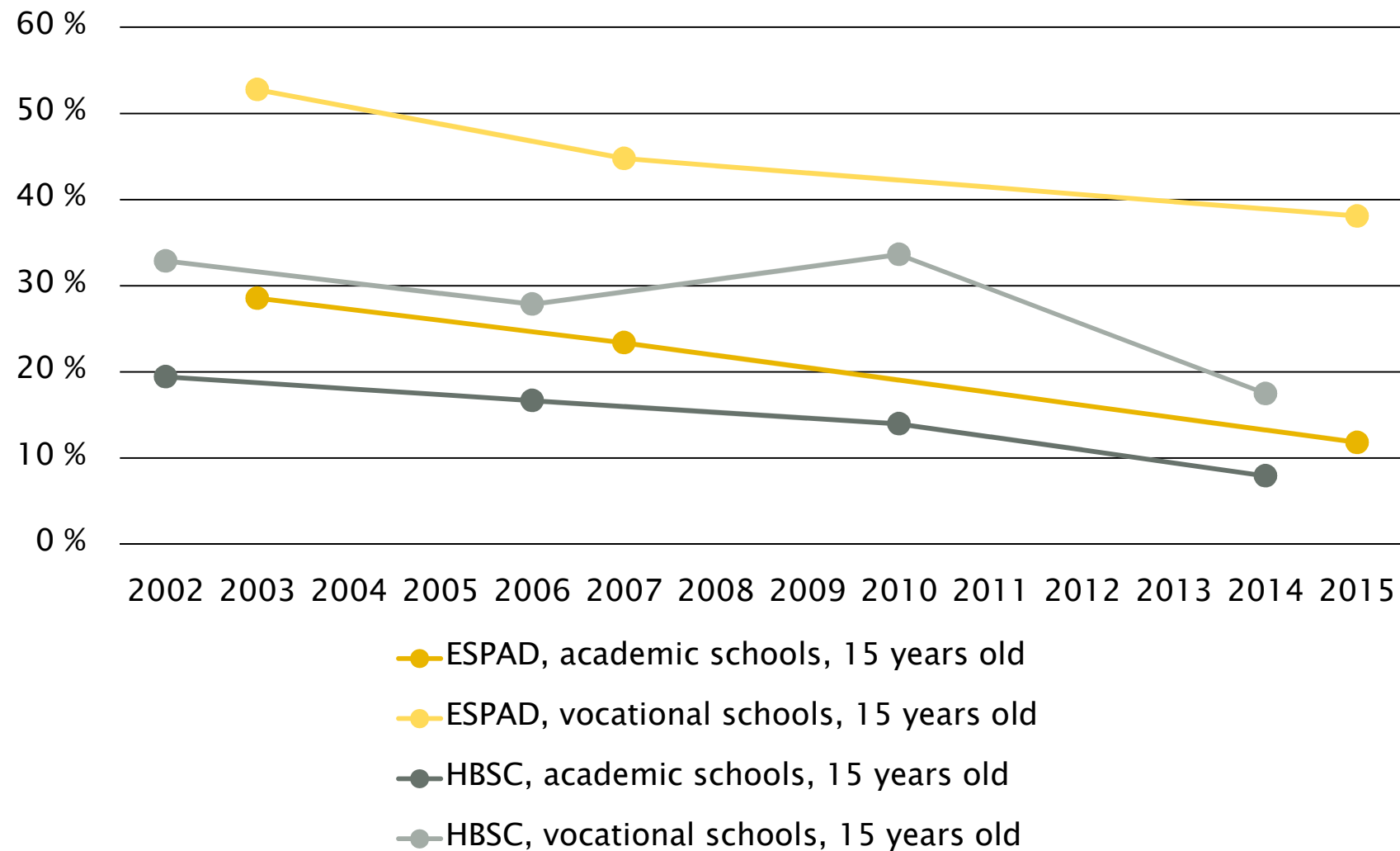
—●— GPS (male, 16 +)

—●— GPS (female, 16 +)

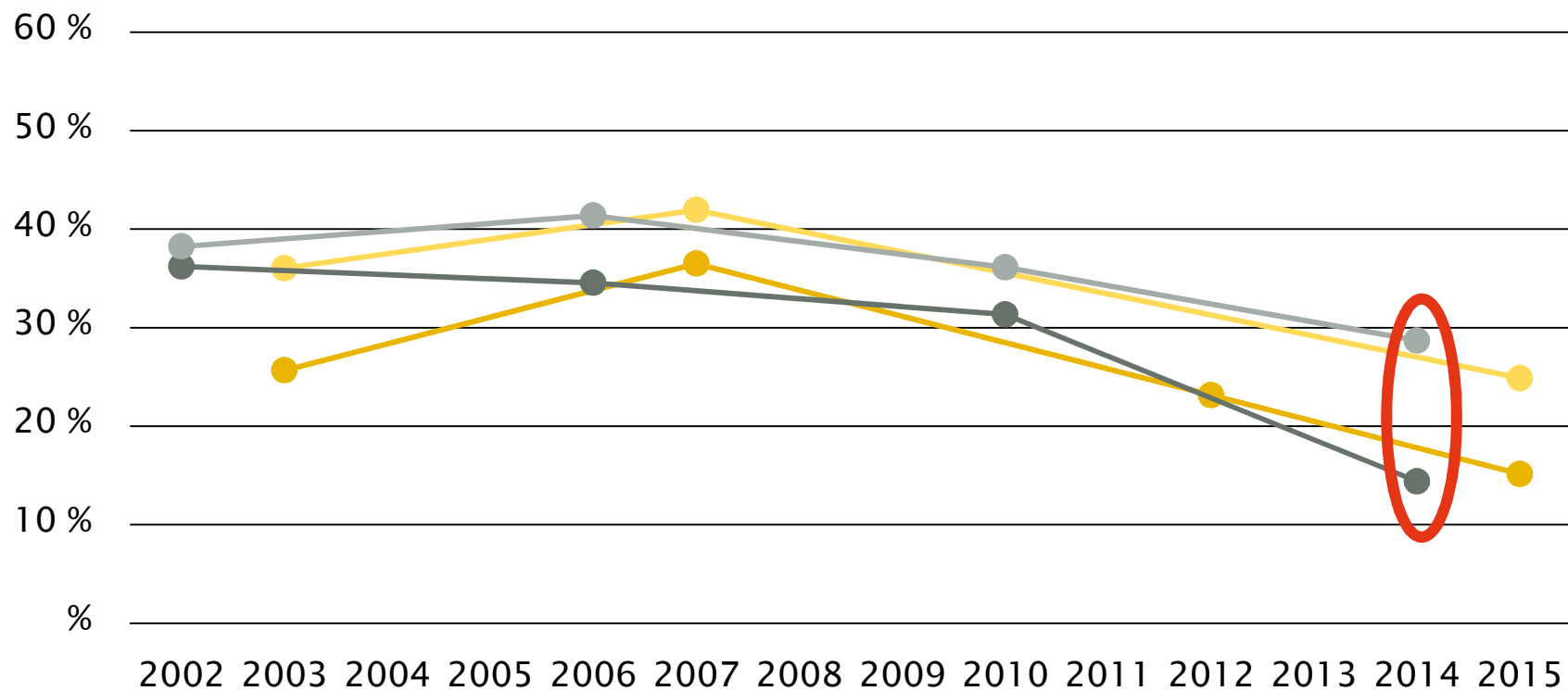
—●— sales and production

**ARE TRENDS SIMILAR FOR DIFFERENT  
SUBPOPULATIONS?**

## Daily smoking by type of school: ESPAD and HBSC

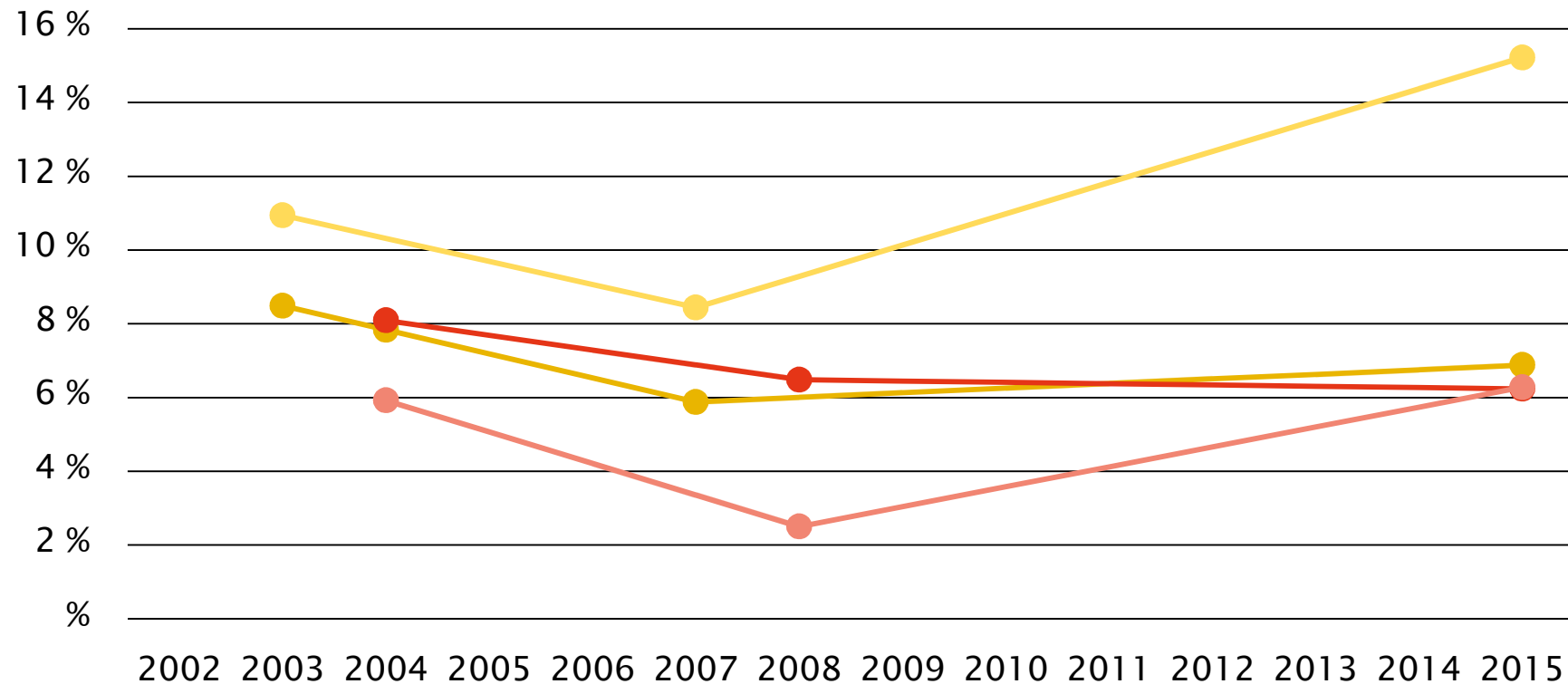


## Alcohol frequency by type of school: ESPAD and HBSC



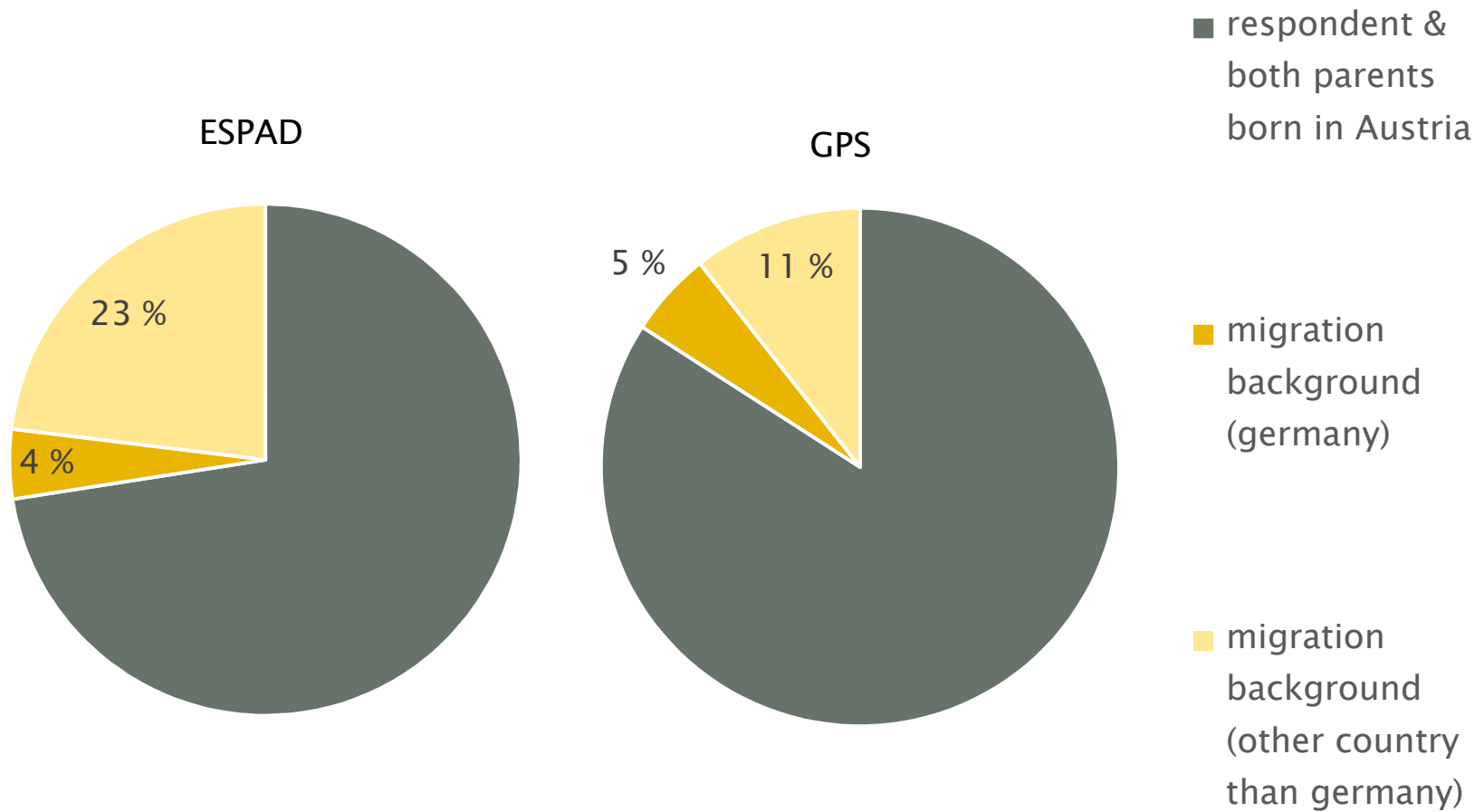
- 6 times + per month (ESPAD, academic schools, 15 year old)
- 6 times + per month (ESPAD, vocational schools, 15 years old)
- weekly consumption (HBSC, academic schools, 15 years old)
- weekly consumption (HBSC, vocational schools, 15 years old)

## LMP cannabis by education/type of school: ESPAD and GPS

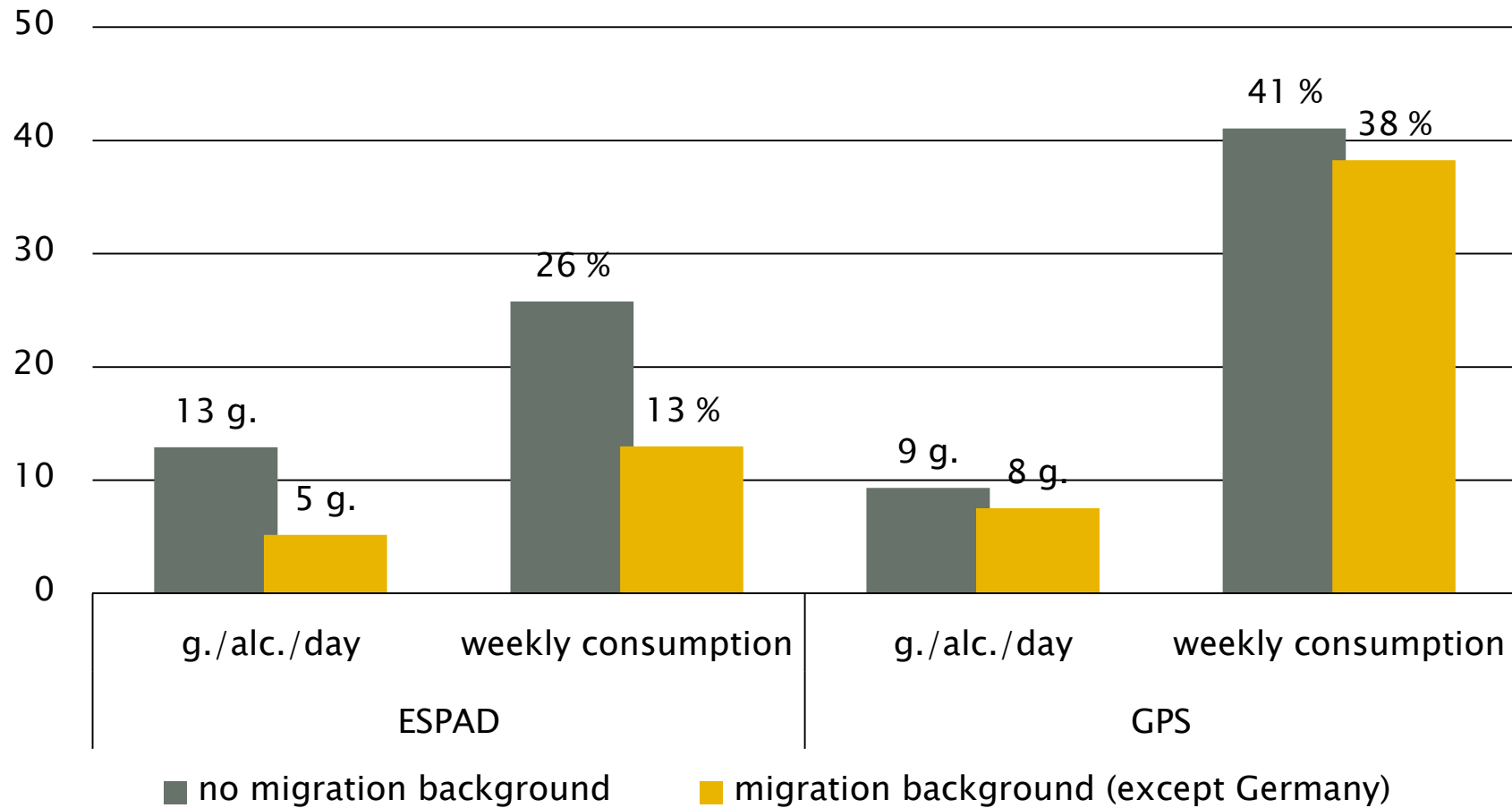


- ESPAD, academic schools, 15 & 16 years old
- ESPAD, vocational schools, 15 and 16 years old
- GPS, higher school certificate, 19 -29 years old
- GPS, no higher school certificate, 19 -29 years old

## Coverage of migration background: ESPAD and GPS



## Migration background and alcohol consumption



## So what...

---

- » Trends in Austria for alcohol and tobacco are consistent among student surveys but inconsistent for tobacco in adult population
- » smoking decreases both among men and women, difference between men and women in alcohol consumption are getting smaller
- » differences across educational groups are rather small for alcohol but may get bigger, remain high for tobacco and seem to flip for cannabis
- » migration background (culture/religion/family values) seems to affect alcohol consumption among students, but shows only little effect on adult alcohol consumption and tobacco and cannabis consumption



Thank you for your attention!