



**NÁRODNÍ
MONITOROVACÍ
STŘEDISKO
PRO DROGY
A DROGOVÉ ZÁVISLOSTI**



NÁRODNÍ
MONITOROVACÍ
STŘEDISKO
PRO DROGY
A DROGOVÉ ZÁVISLOSTI

Misuse of buprenorphine in Czech Republic

TDI meeting, 20/09/2012

Czechs ban spirits after bootleg alcohol poisoning



18 September 2012 Last updated at 01:21 GMT

The Czech government has banned the sale of all spirits containing more than 20% a spate of poisonings that has left 20 people dead.

The poisonings have been blamed on bootleg vodka and rum tainted with the industrial methanol and sold cheaply at markets and outdoor kiosks. Czech police have arrested and seized 5,000 litres of spirits, as well as counterfeit labels.

Poland has also taken the step of banning all Czech-made alcohol.

Julie Peacock reports.

[Read More](#)

[Czech spirits ban after poisoning](#)

Most watched/listened

- Obama: President 'works for everyone' 1
- Zoo breeds world's first Liliger 2

23 people dead

34 in hospitals in critical conditions

Illegally produced alcohol

Prohibition of all alcohol drinks >20% alc.

Missing EWS...



Substitution treatment – legal background

- provided in outpatient medical facilities
- obligatory reporting to the ST National Register
- all MDs are allowed to prescribe methadone or buprenorphine ⇒ conditions of authorised handling ⇒ stricter control
- Professional standard for ST (since 2001) ⇒ no binding criteria for duration of ST, dosing, etc.



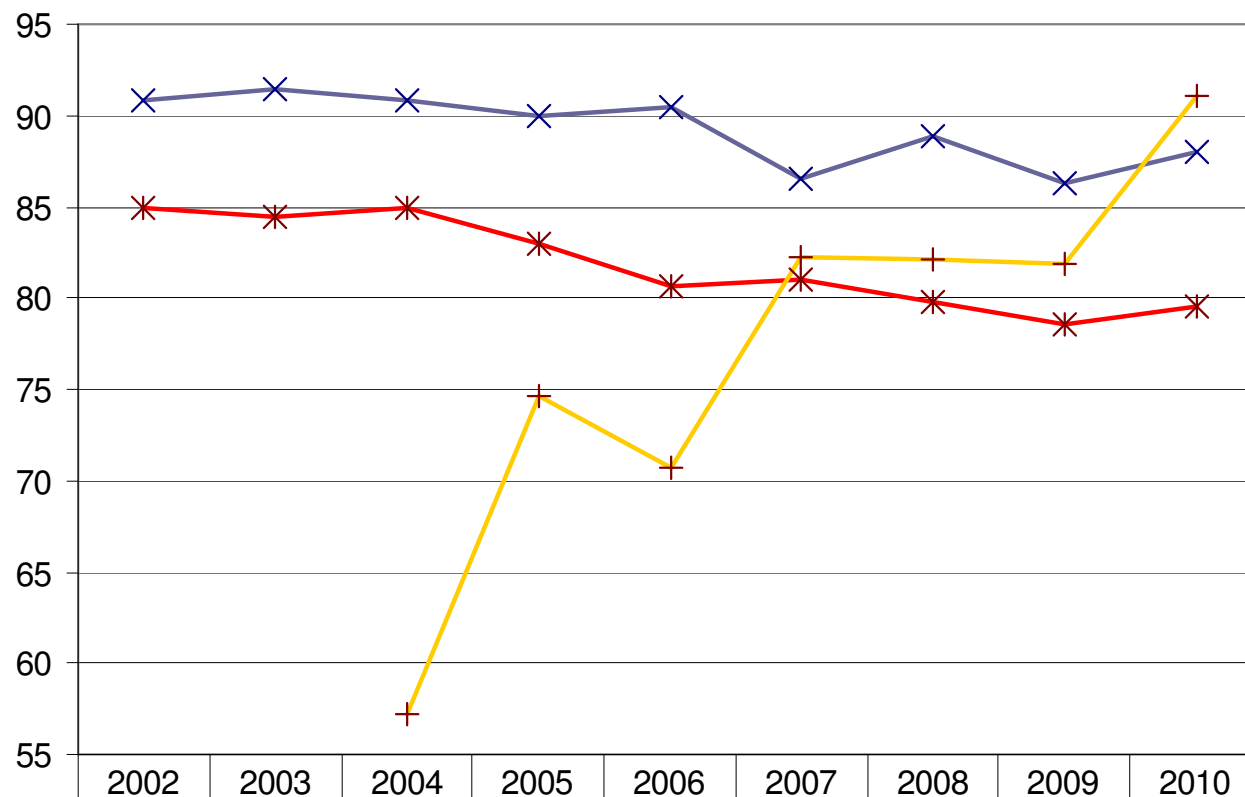
Prevalence of PDUs

	PDUs total	opiates/opioids			Pervitin PDUs	IDUs
		Subutex®	total	nr.		
2005	31 800	n.a.	13 300	21 800	31 700	
2006	30 200	n.a.	10 200	18 800	27 800	
2007	30 900	n.a.	9 700	20 300	27 000	
2008	32 500	n.a.	11 300	20 500	29 800	
2009	37 400	4 300	10 500	19 700	29 000	
2010	39 200	5 700	10 000	20 900	29 500	
		6 400	11 300	21 200	31 200	
		7 100	12 100	25 300	35 300	
		6 000	11 000	28 200	37 200	

Prague and Central Bohemia
 = 4 000 Subutex® users
 = 13 000 PDUs in total
 = 864 ST patients registered



IDUs in treatment demand register (ATD)

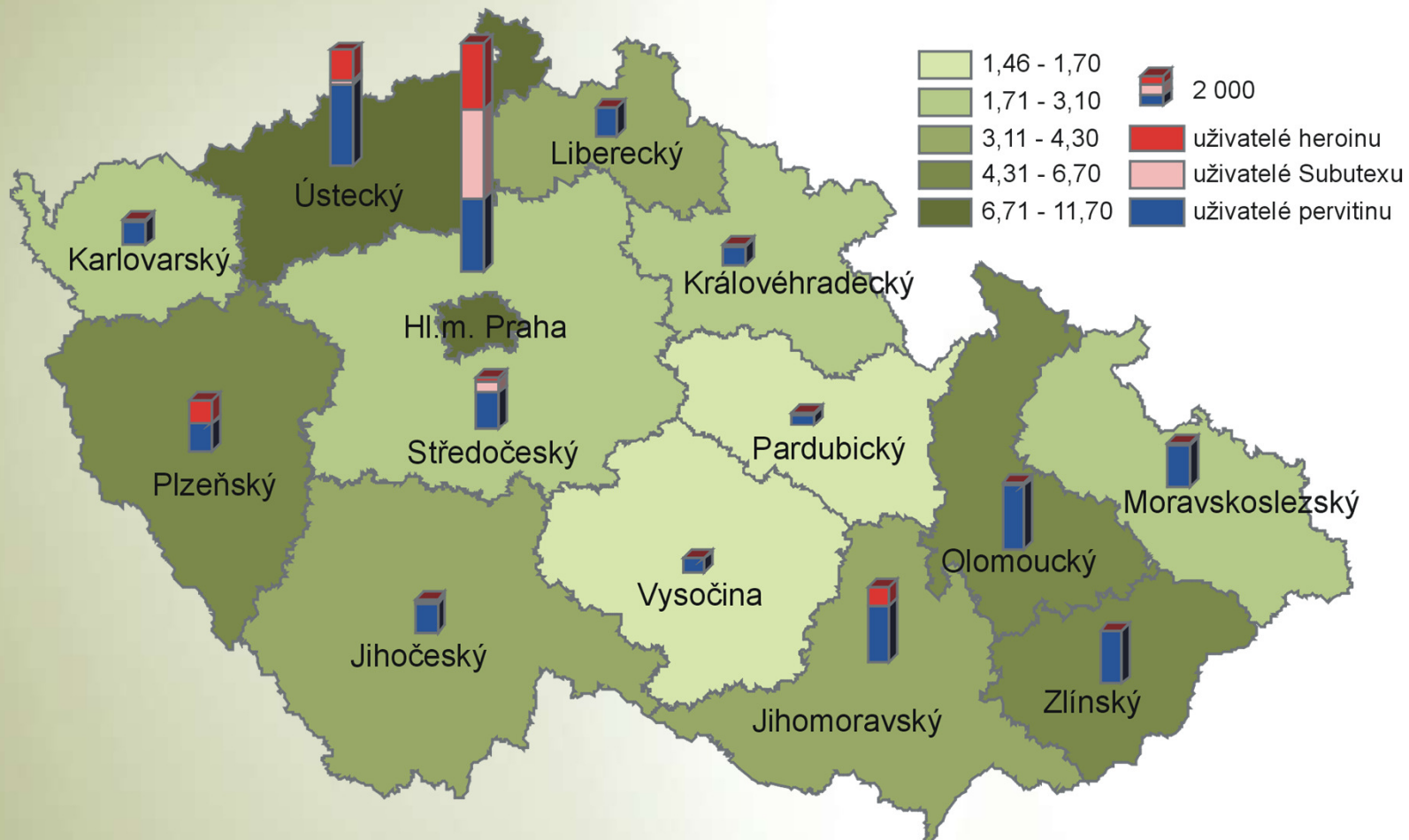


—×— inj. aplikace heroinu	90,8	91,4	90,8	90,0	90,4	86,5	88,9	86,3	88,0
—*— inj. aplikace perritinu	85,0	84,4	84,9	82,9	80,7	81,0	79,8	78,5	79,6
—+— inj. aplikace Subutexu®			57,2	74,7	70,7	82,2	82,1	81,8	91,0



Prevalence of PDUs in the CZE

■ Regional distribution – nr. of PDUs/1000 inhabitants (age: 15–64)



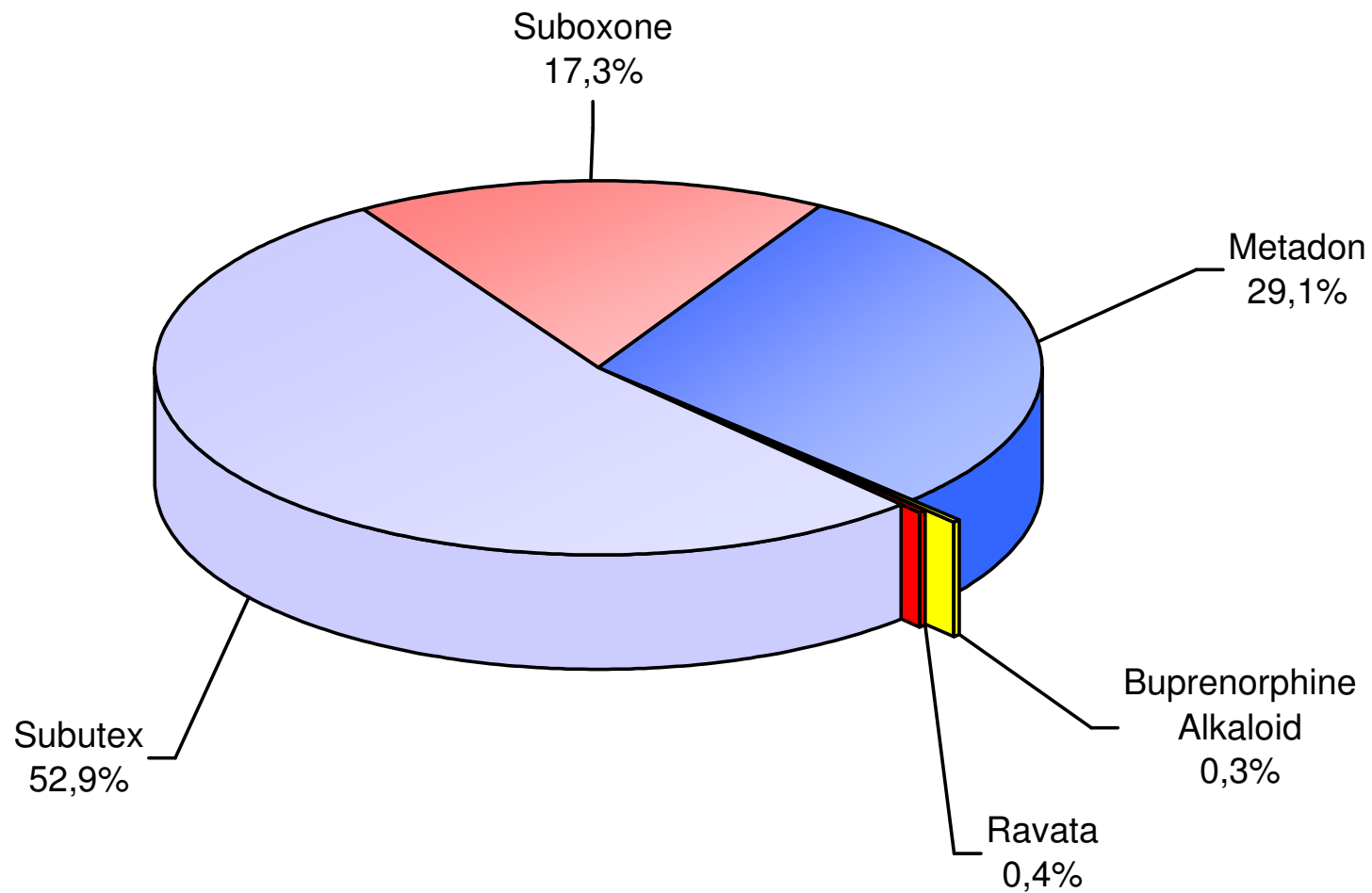


National ST register

Year	Nr. facilities registered		Nr. of clients in register		
	registered	active	total		
				Methadone	Buprenorphine
2001	8	8	533	510	23
2002	8	8	560	511	49
2003	8	8	789	520	269
2004	8	8	866	546	320
2005	9	9	825	571	254
2006	12	12	938	586	352
2007	14	13	1 038	605	433
2008	38	24	1 356	689	667
2009	72	34	1 555	686	869
2010	96	45	2 113	744	1 369
2011	108	55	2 290	667	1 623



ST register - substances

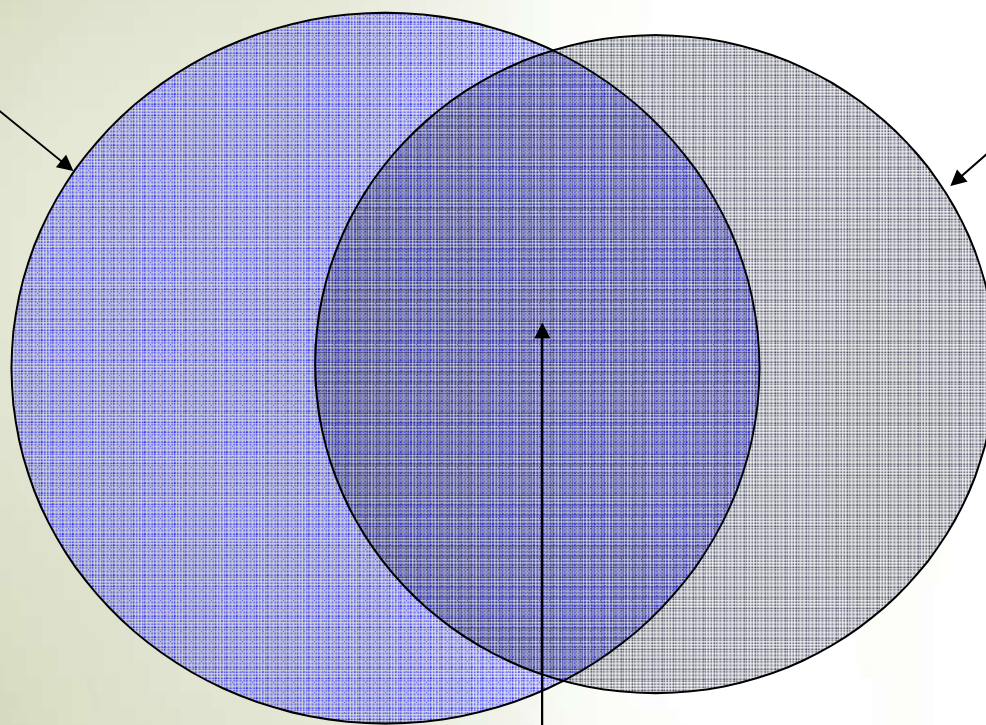




ST medication: misuse vs. treatment

PDU (IDU) of Subutex[®]: cca 5000

Subutex[®]/Suboxone[®] users in treatment: cca 4500



PDU (IDU) in treatment: cca 3000

pharmacies

7x8mg = 55 Euro

black market

1x8mg = 10–30 Euro



?

reasons?

- low quality heroin (x rare fentanyl/opium/morphine users)
- low dosages (injecting use = better effect)
- accessibility (x restrictions = lower accessibility)

advantages?

- low nr. of overdoses
- relatively safe substance (x infections, endocarditis)



NÁRODNÍ
MONITOROVACÍ
STŘEDISKO
PRO DROGY
A DROGOVÉ ZÁVISLOSTI

thank you

Vlastimil Nečas (necas.vlastimil@vlada.cz)

www.focalpoint.cz