

New trends in Hungary

Session 2: New trends in TDI clients

Anna Péterfi
Hungarian National Focal Point

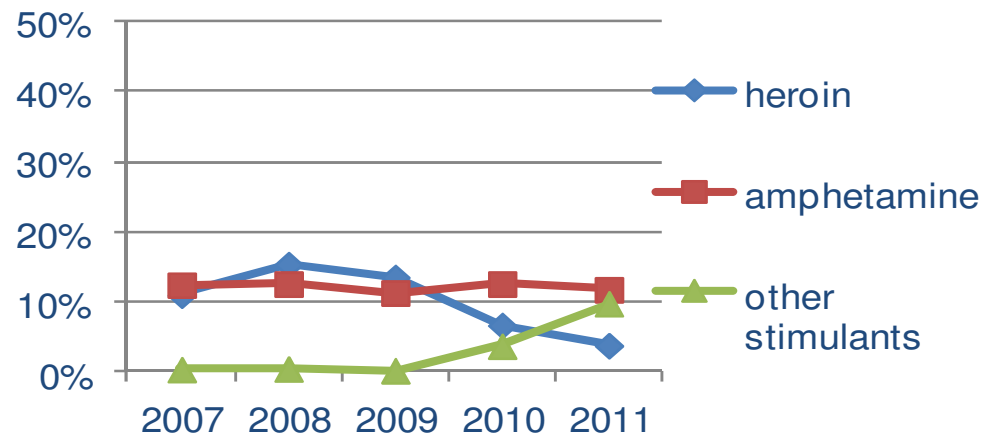
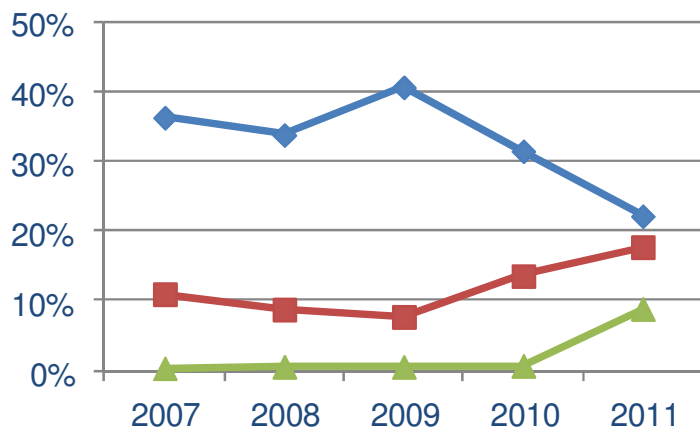
TDI – 12th Annual Expert Meeting 2012
Lisbon, 20-21 September 2012



Drog, Adat, Döntés

New trends in TDI (1)

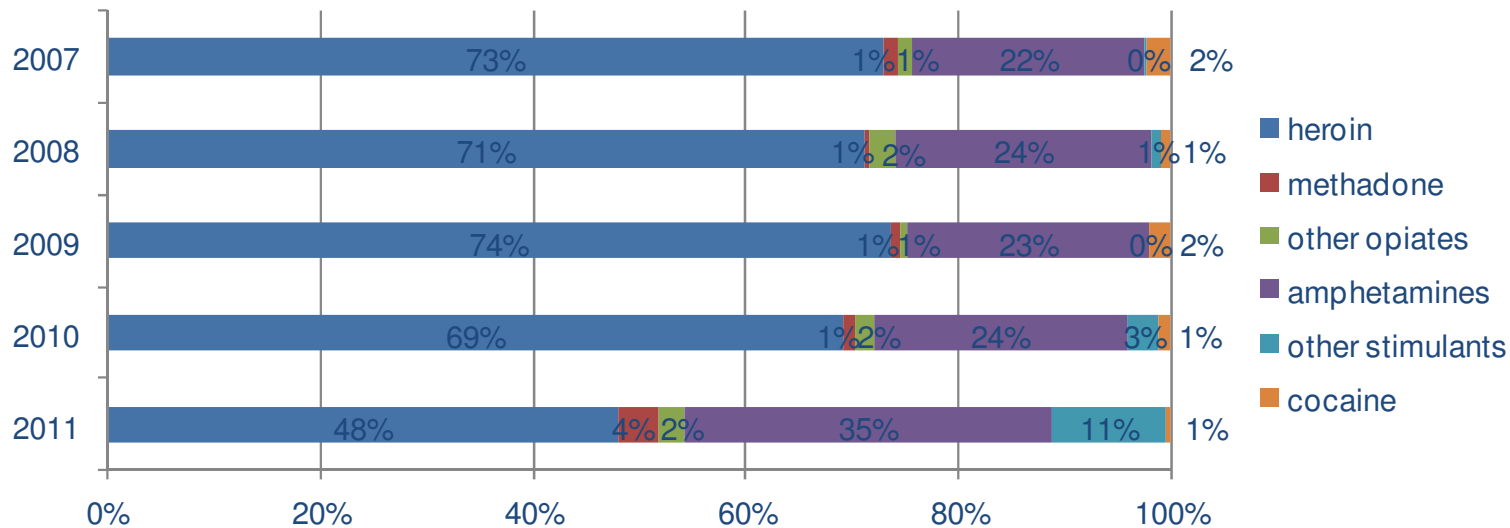
Proportion of users of heroin, amphetamine and other stimulants among clients already treated before (first chart) and among clients starting treatment for the first time (second chart) (not in QCT), between 2007 and 2011 (%)



Source: National Centre for Addictions and Hungarian NFP

New trends in TDI (2)

Distribution of substances among all IDUs* between 2007 and 2011 (%) Taking into consideration users of opiates, amphetamine, other stimulants and cocaine, on the basis of the typical route of administration in the 30 days before starting treatment.



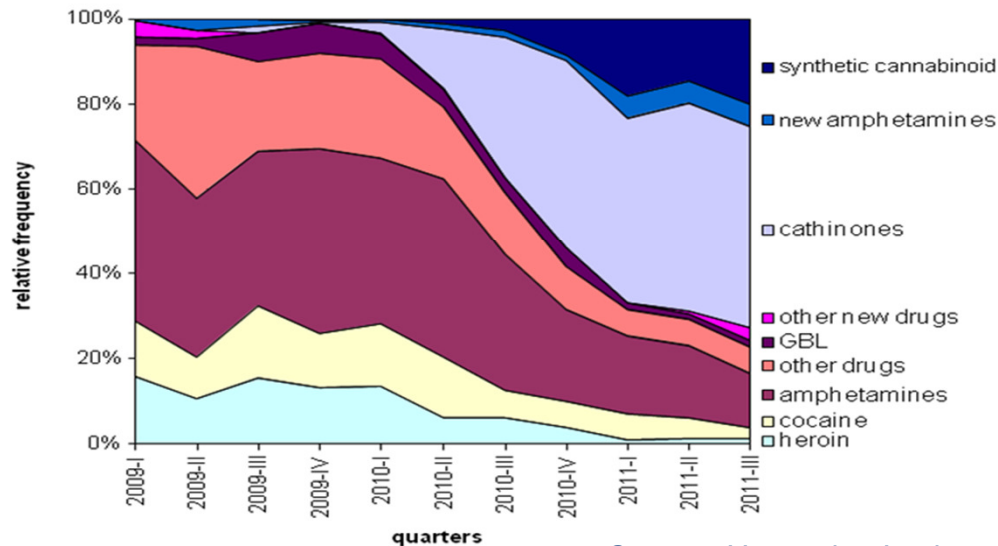
Source: National Centre for Addictions and Hungarian NFP

*Taking into consideration users of opiates, amphetamine, other stimulants and cocaine, on the basis of the typical route of administration in the 30 days before starting treatment.

Other data sources (1)

- Seizures data: low availability of heroin, increased availability of cathinones since 3rd quarter of 2010

Proportion of substances other than THC (forensic laboratories, total)
(national level)

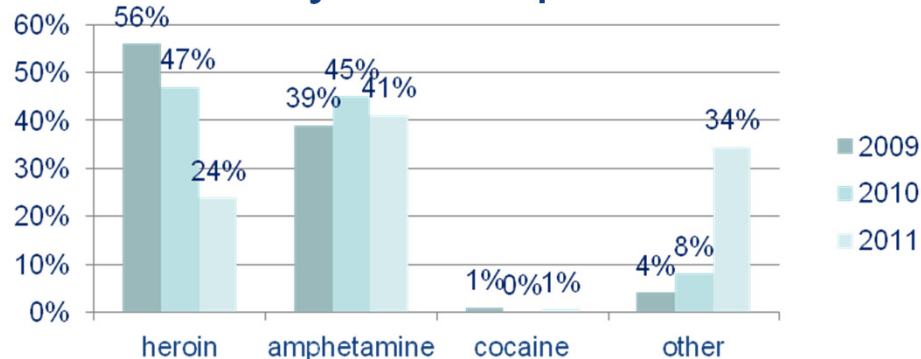


Source: Hungarian Institute for Forensic Sciences

+ similar changes in the content of syringes and filters

Other data sources (2)

- GPS (ESPAD): mephedrone LTP 6% (5th highest)
- NFP qualitative studies: increasing number of cathinone users get in touch with services; transition of primary substance
- NSP national study: % of opiate users dropped



Source: Tarján 2012

- NSP study (one programme): transition from heroin to cathinones or amphetamines
- DRD: Decreasing heroin related mortality since 2010

Conclusions

- drop of heroin related treatment demand
- increase of 'amphetamines' and 'other stimulants' related treatment demand
- restructuring patterns among IDUs in and outside treatment
- reasons and consequences to be further monitored

Further considerations

- intentional and unintentional polydrug use of new substances
- categorisation problems (in case of new substances; when the actual substance unknown)
- how to handle changes of primary substance when monitoring (e.g. TDI prevalence)
- definitions vs. interpretations
- intensity and timing of trends across different indicators

Exchange on data collection challenges related to new psychoactive substances use:

www.drogfokuszpont.hu  → EWS

peterfi.anna@oek.antsz.hu

www.drogfokuszpont.hu