

Treatment Demand for Heroin in Luxembourg, Injecting behaviour and other gender differences

Treatment Demand Indicator 12th Annual Meeting 2012, 20 – 21 September

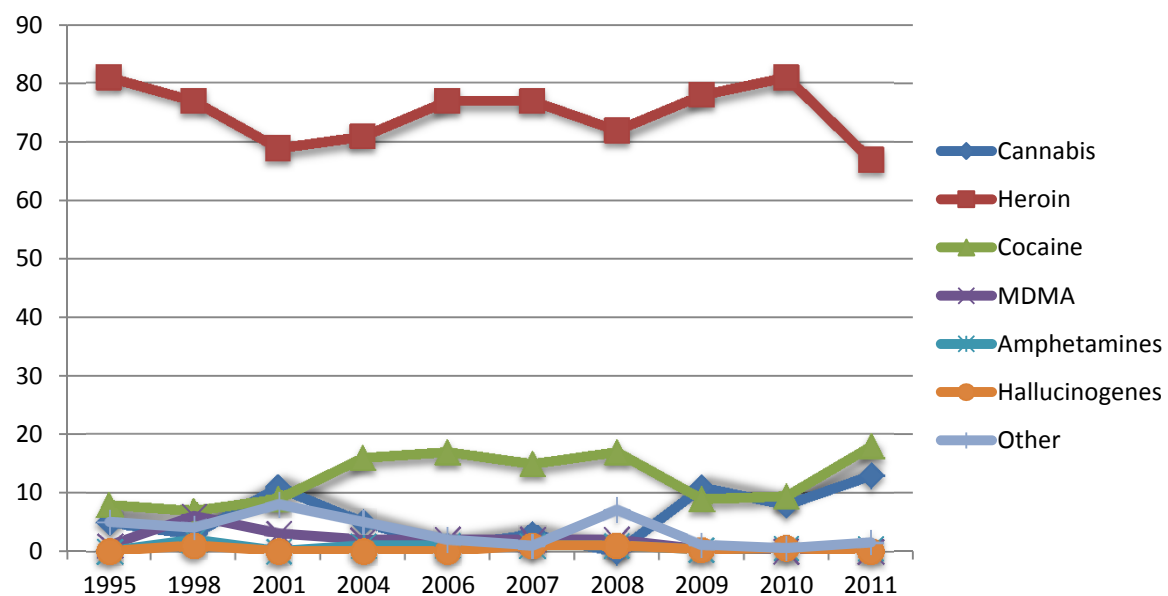
Sofia Lopes da Costa

- **Treatment demand since 1995 to 2011 in Luxembourg**
- **Gender differences of Heroin Treatment Demanders (last 3 years)**
 - **Consumption mode of Heroin**
 - **Ages of treatment demanders**
 - **Law enforcement**
 - **ODs**
 - **OST**
 - **Needle sharing**
- **Discussion, Conclusion**

Treatment demand since 1995 to 2011

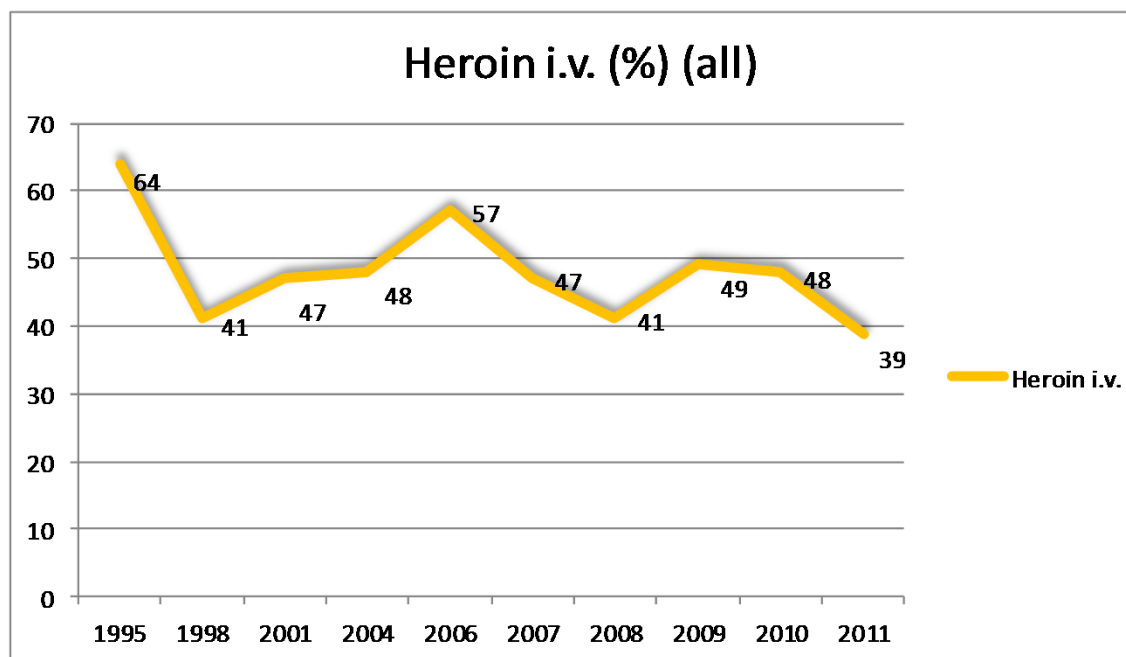
EMCDDA FOCAL POINT LUXEMBOURG

Primary Drug in Treatment Demand (%)



Percentage of IDUs among Heroin TDers (1995 – 2011)

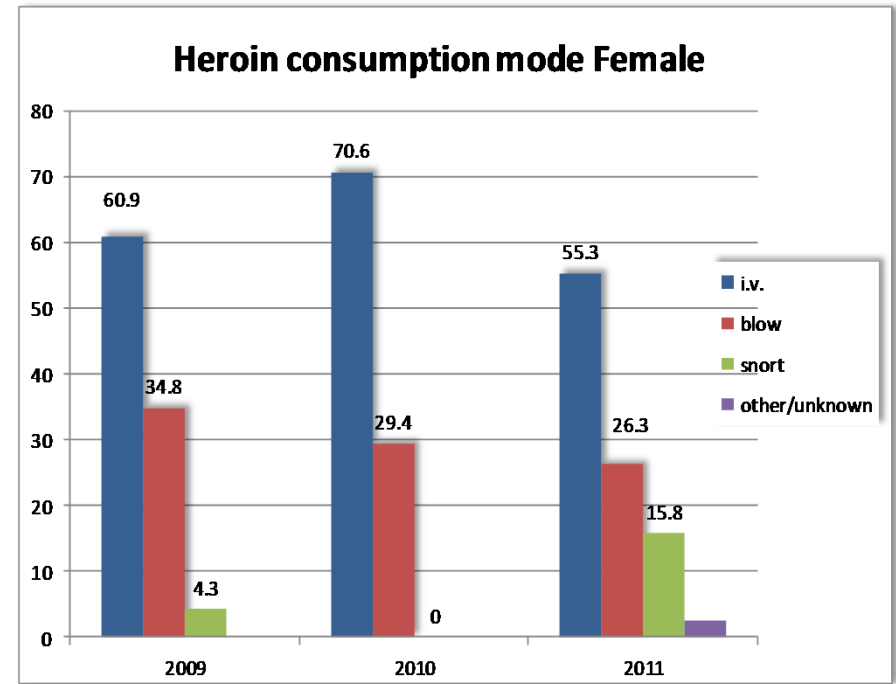
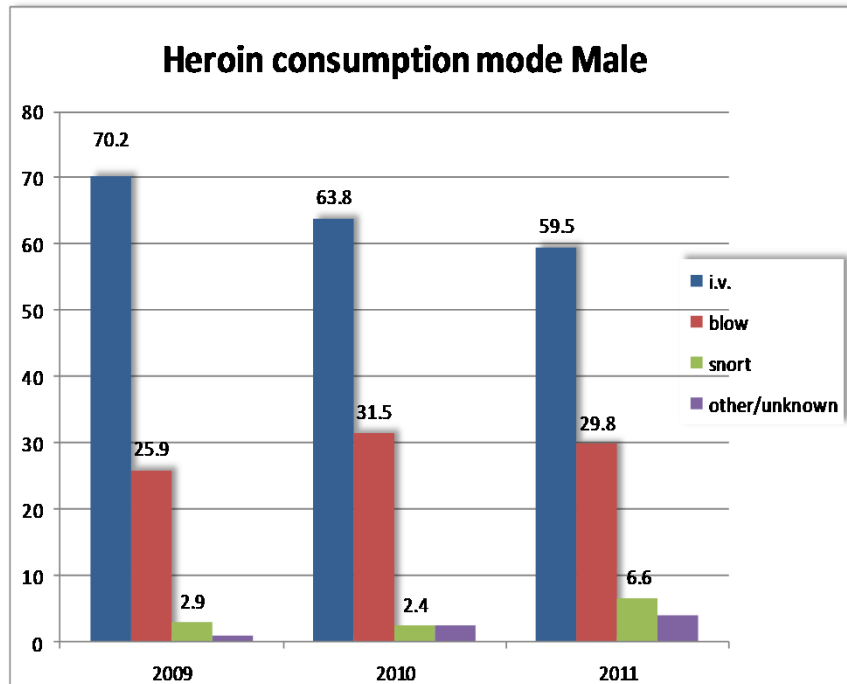
EMCDDA FOCAL POINT LUXEMBOURG



Gender differences of Heroin Treatment Demanders (last 3 years)

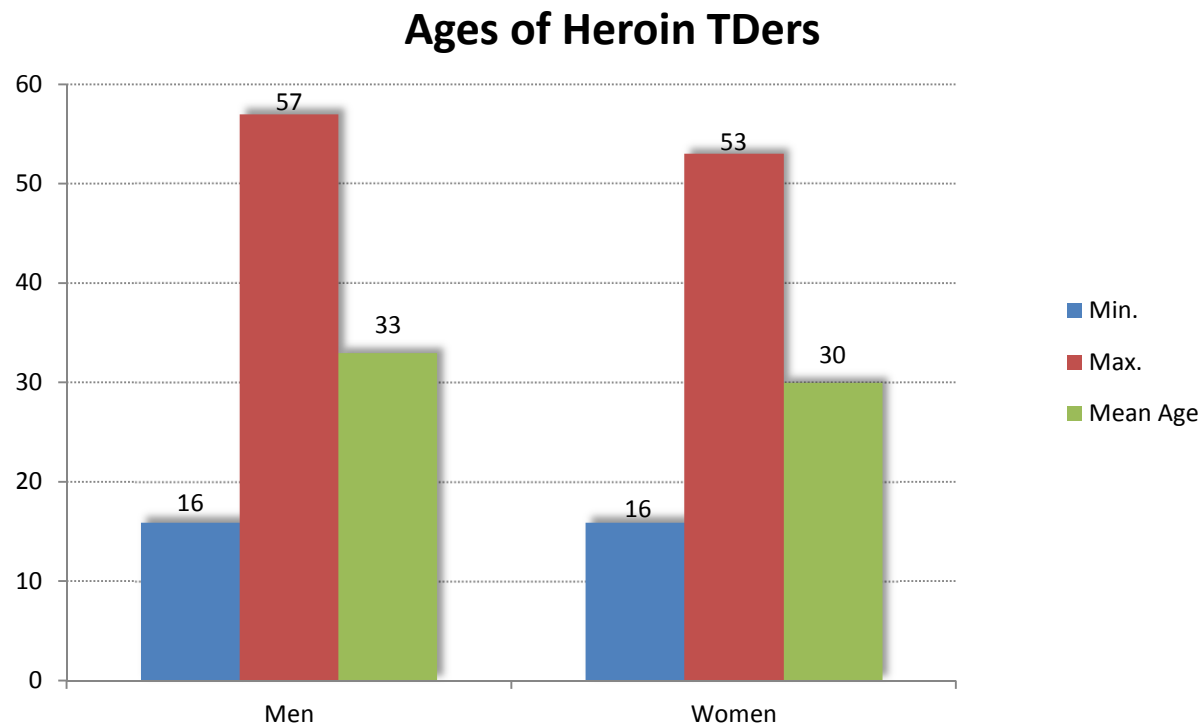
EMCDDA FOCAL POINT LUXEMBOURG

Consumption mode according to gender

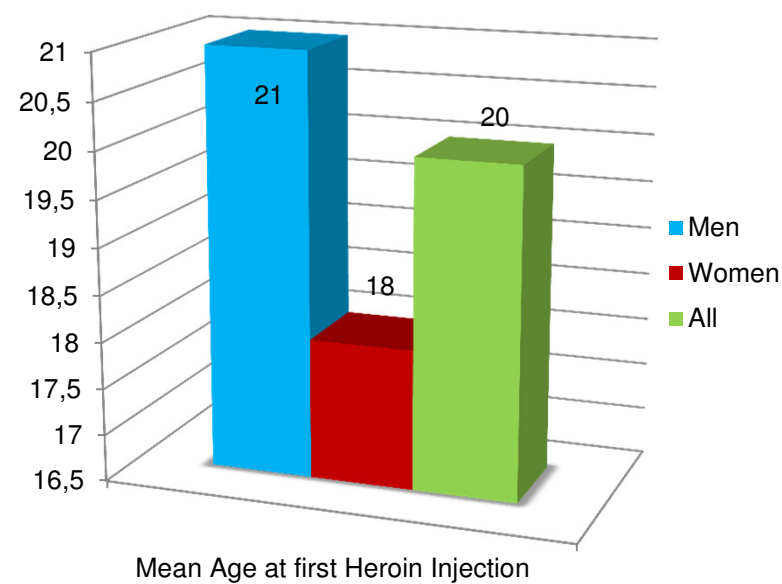
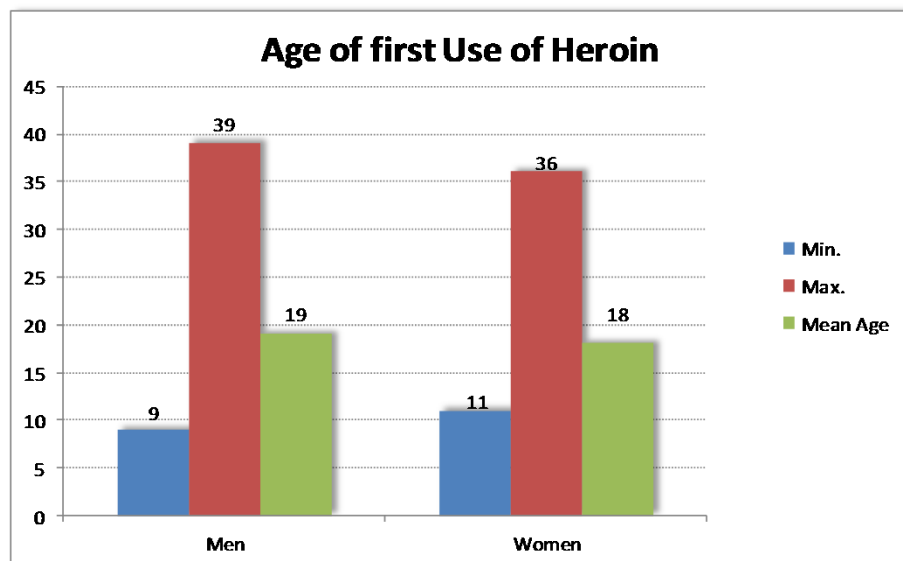


Ages of treatment demanders, age of first use, mean age at first treatment demand

EMCDDA FOCAL POINT LUXEMBOURG

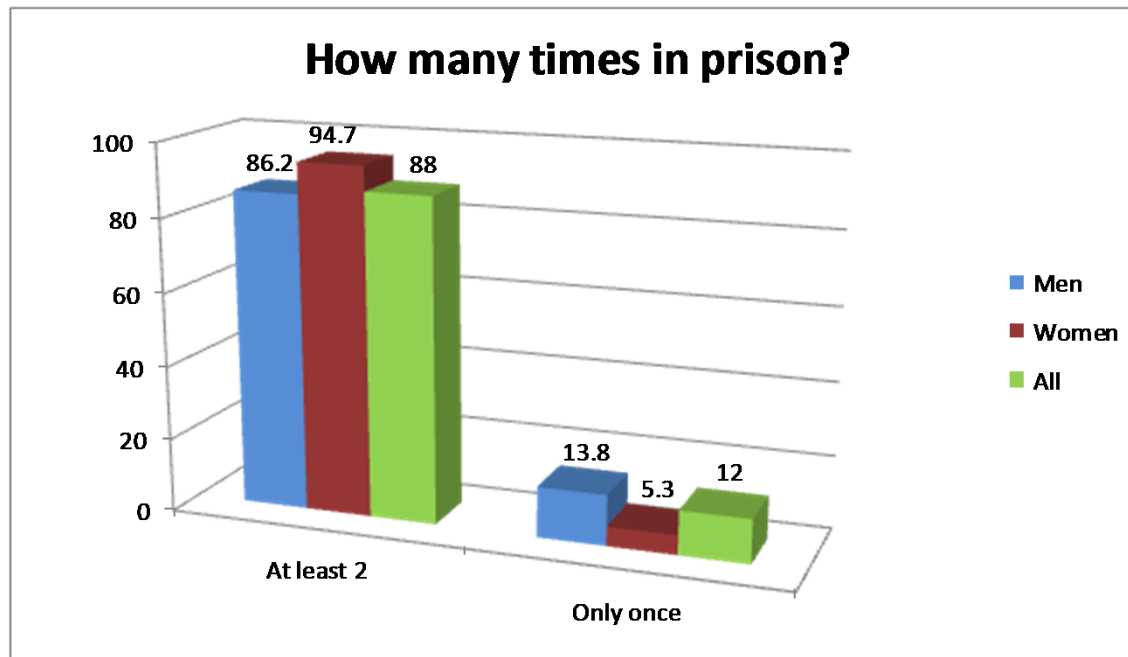


EMCDDA FOCAL POINT LUXEMBOURG



Law enforcement (prison)

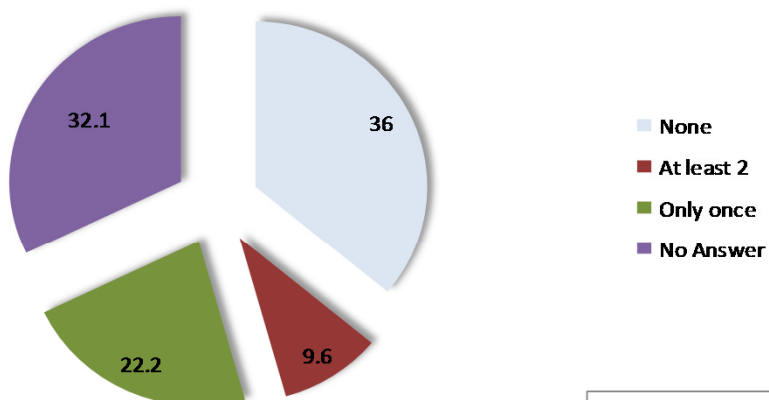
EMCDDA FOCAL POINT LUXEMBOURG



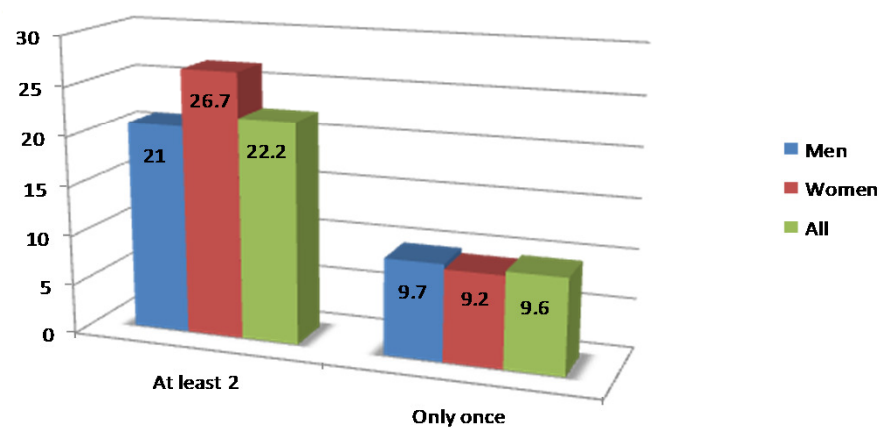
ODs

EMCDDA FOCAL POINT LUXEMBOURG

How many ODs?

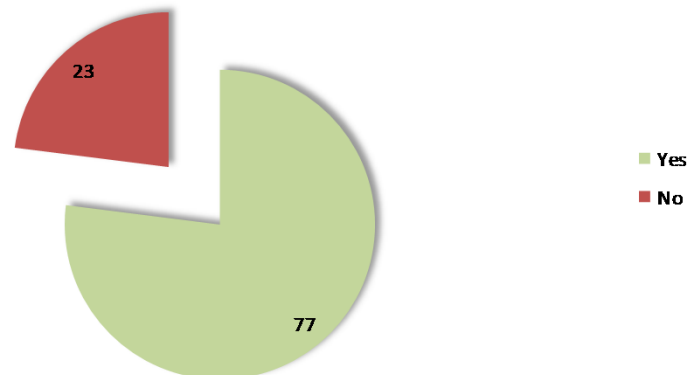


How many ODs?

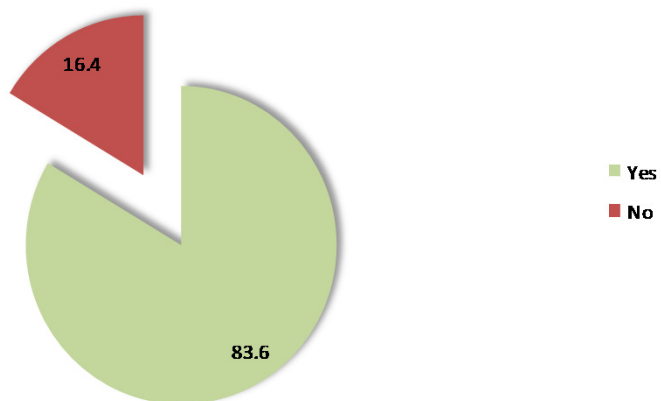


EMCDDA FOCAL POINT LUXEMBOURG

Substitution treatment (lifetime) Female ?

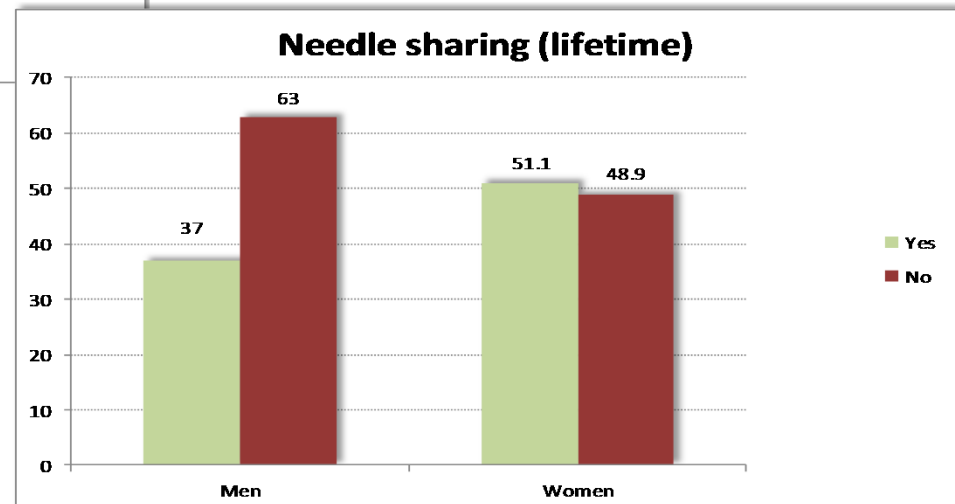
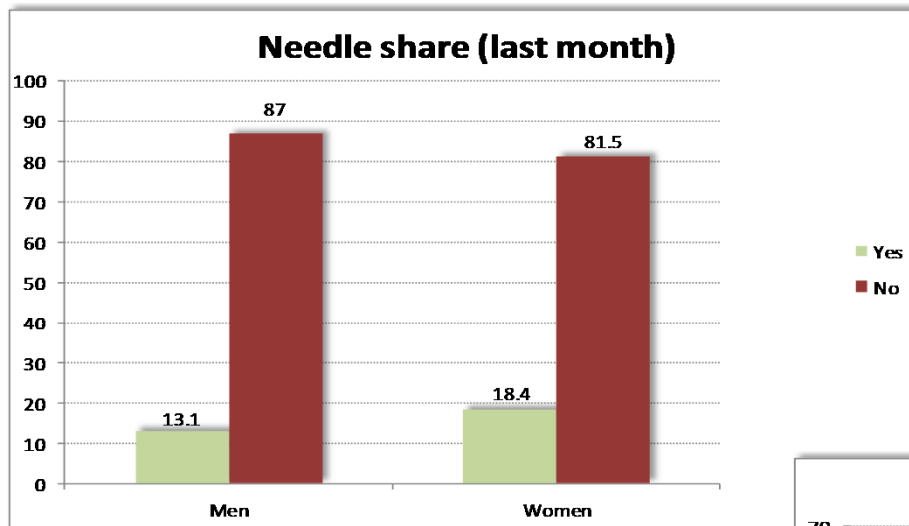


Substitution treatment (lifetime) Male ?



Needle sharing with other users

EMCDDA FOCAL POINT LUXEMBOURG



Women :

- Mean age of heroin treatment demanders (younger)
- Start injecting Heroin earlier
- More contacts with law enforcement and prison
- Less OST
- More needle sharing with other users

Questions raised :

- Women addiction more complexe, problematic ?
- Do women "exaggerate" more (self-report) ?
- Treatment offer adequate, targeted to women ?
- Methodological issues (sample size) ?

Thank you for your attention...



sofia.lopes@crp-sante.lu