



Covid-19 and effect on substance abuse treatment

Finnish situation report

Antti Impinen

TDI expert meeting, Lisbon

5 Nov 2020

Finnish Institute for Health and Welfare

Effect on services for substance abusers

- Closed or limited services during spring (telemedicine used)
- No places to stay during days or nights
 - Decreased levels of rest, hygiene, and nutrition
 - Many have slept in railway stations, malls, public toilets
- Increased disturbances and complaints in neighbourhoods
 - Open drug use on public spaces, dirty injecting equipment, complaints to police, bicycle thefts,

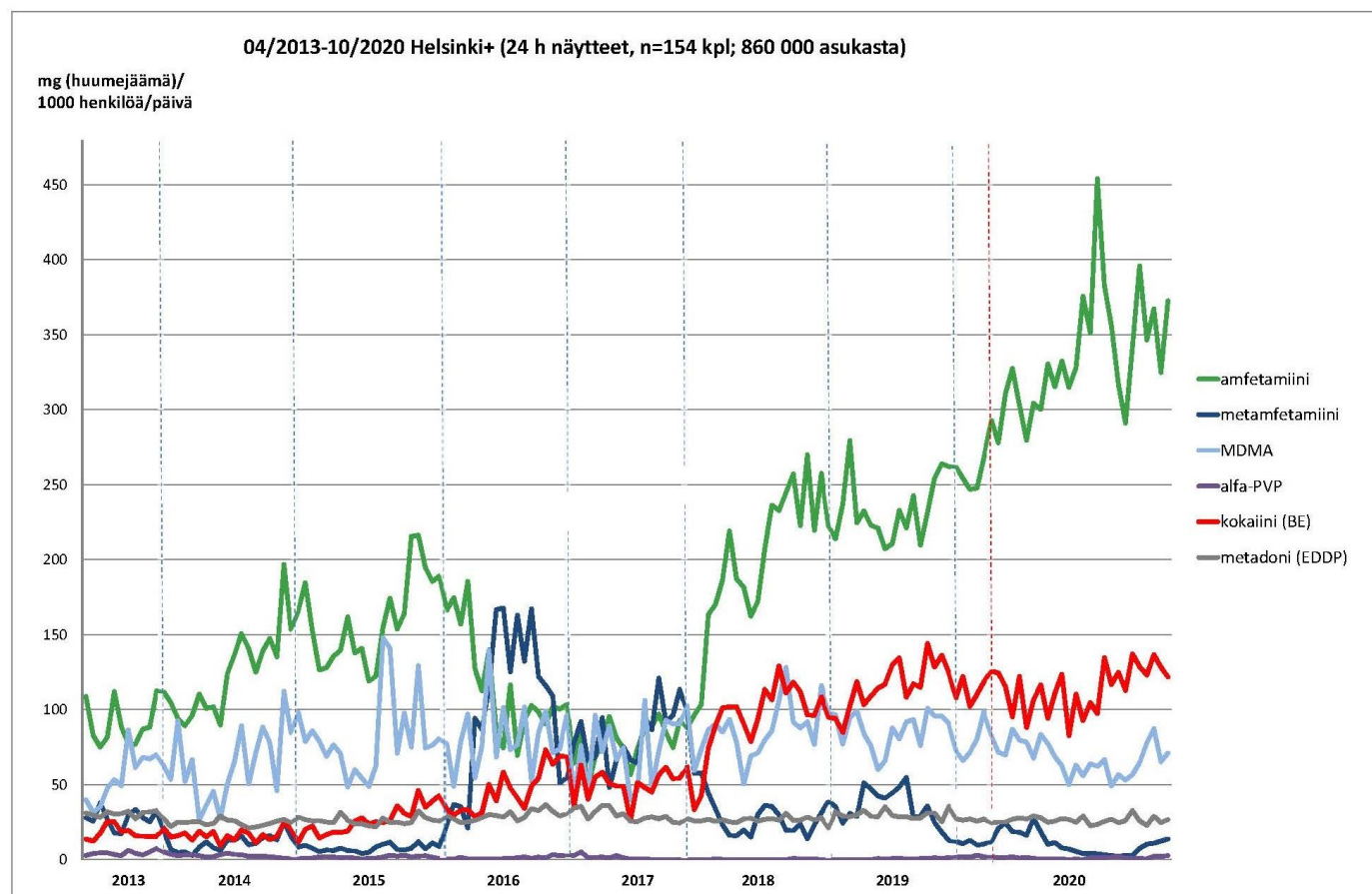
Police observations

- Drop in international passengers did not limit the supply of drugs
- Most of the drugs imported arrive with cargo – not affected
- Spring: Increased amount of violent crime and public disturbance

Good practices in services

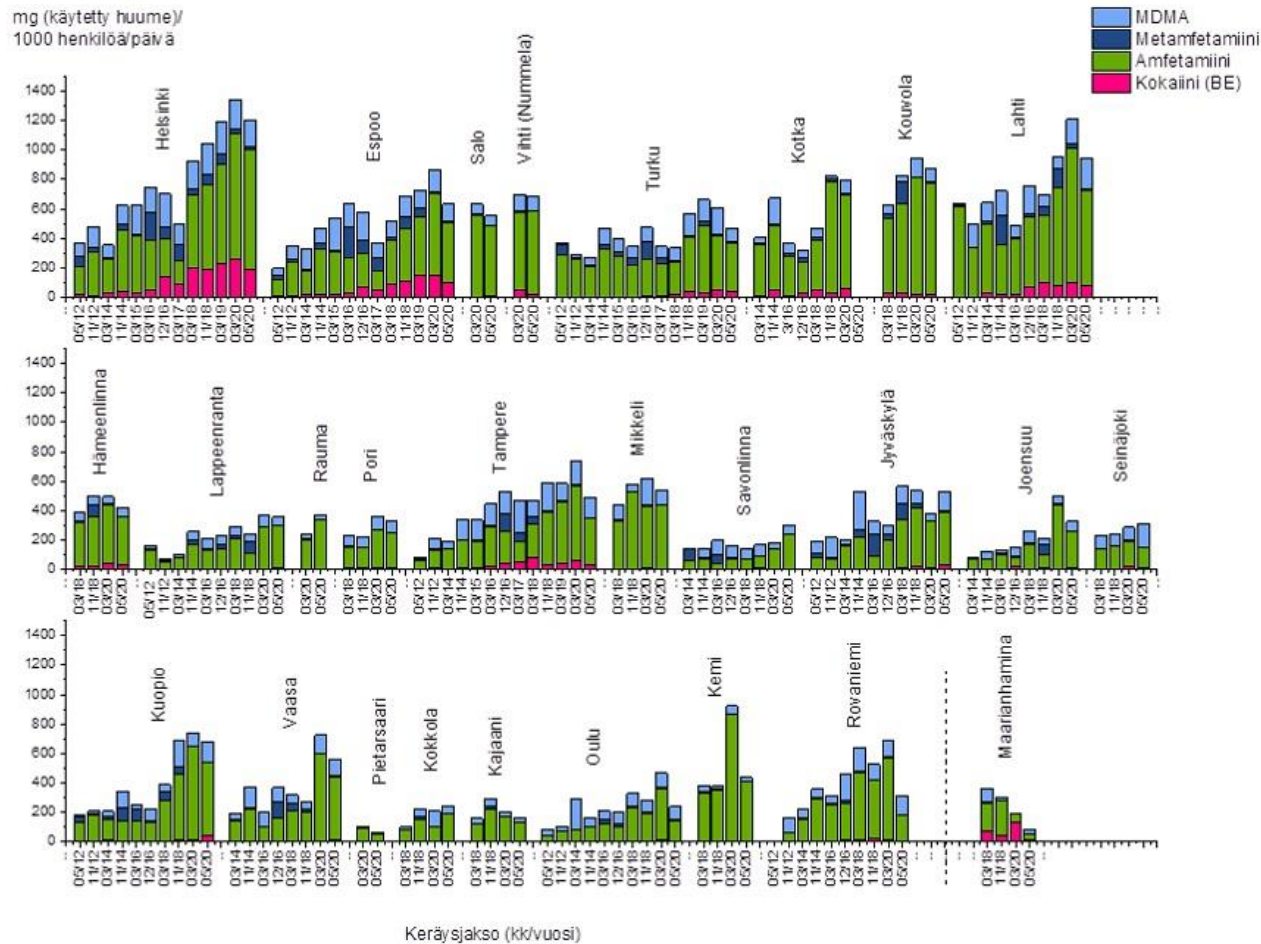
- Provide opportunity for services (showering, laundry, guidance, lunchbags) while limited number of visitors
- Outreach work from low threshold service
- Collaboration between organizations (municipal, volunteer, accommodations)

Wastewater study: Drug residuals



- Amphetamine use high on corona times
- Rising trend from 2017 to 2020
- More information:
Teemu Gunnar, Aino Kankaanpää:
The practical implications of wastewater-based illicit drug epidemiology. *Current Opinion in Environmental Science & Health*, 9 (2019) 49-57.

Wastewater study: Drug residuals



- Samples at 3/20 and 5/20 show high levels of amphetamines nationwide